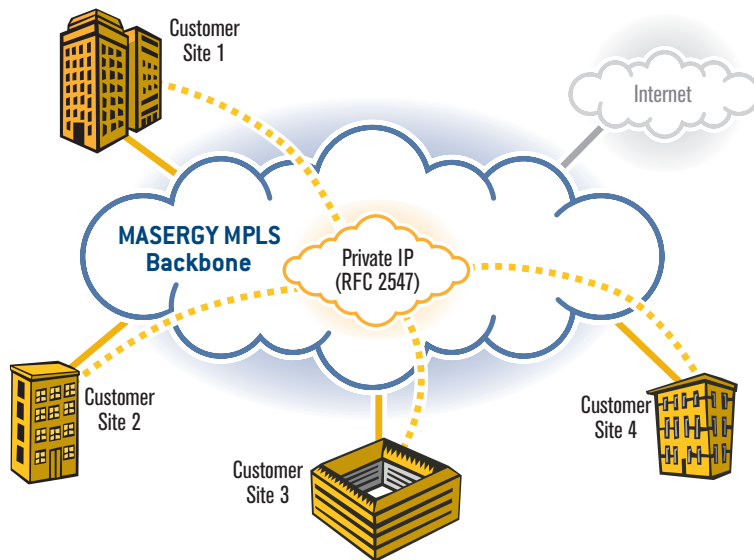


Customer-Controlled Intelligent Networks

*Flexibility and Security on
a Single Network Connection*



Private IP: Now you can have the management and cost advantages of a fully-meshed IP network with the security of a private network, combined with the strongest quality of service (QoS) available. MASERGY's Private IP gives you the ability to improve application performance in a secure, scalable and easy-to-manage network environment. MASERGY deploys native MPLS technology in its entire core network, so you get true site-to-site QoS, five classes of service, and the industry's leading converged business network solution. Since Private IP is part of MASERGY Intelligent Transport service, you can combine this product with any other transport option (including public Internet), add a voice and video service within minutes, and integrate the service with your existing network to create a seamless migration path away from Frame Relay and other legacy technology. Private IP is delivered through Ethernet handoffs to simplify integration with your local area network. Best of all, you can control your network using MASERGY's award-winning Service Control Center to make dozens of changes anytime, day or night, through a web-based service portal.

Fully Meshed and Secure: MASERGY's Private IP is an MPLS-based Layer 3 service that provides a fully-meshed network with the same level of security as ATM and Frame Relay, but at greater cost savings and with easier management.

Key Features:

■ Native IP Technology

- Fully meshed
- Layer 3 resiliency and reroute
- Configuration and management simplicity
- Adding sites is easy

■ Secure Private Networking

- Layer 2-equivalent security
- No complex tunnel encryption or links to set-up

■ True QoS

- Guaranteed site-to-site QoS
- Supports voice, video and data traffic

Service Level Agreement for Voice and Video:

- 100% packet delivery
- Guaranteed in-sequence packet delivery
- 5ms maximum latency variation ("jitter")
- Sub-1 second fast failover - network recovery